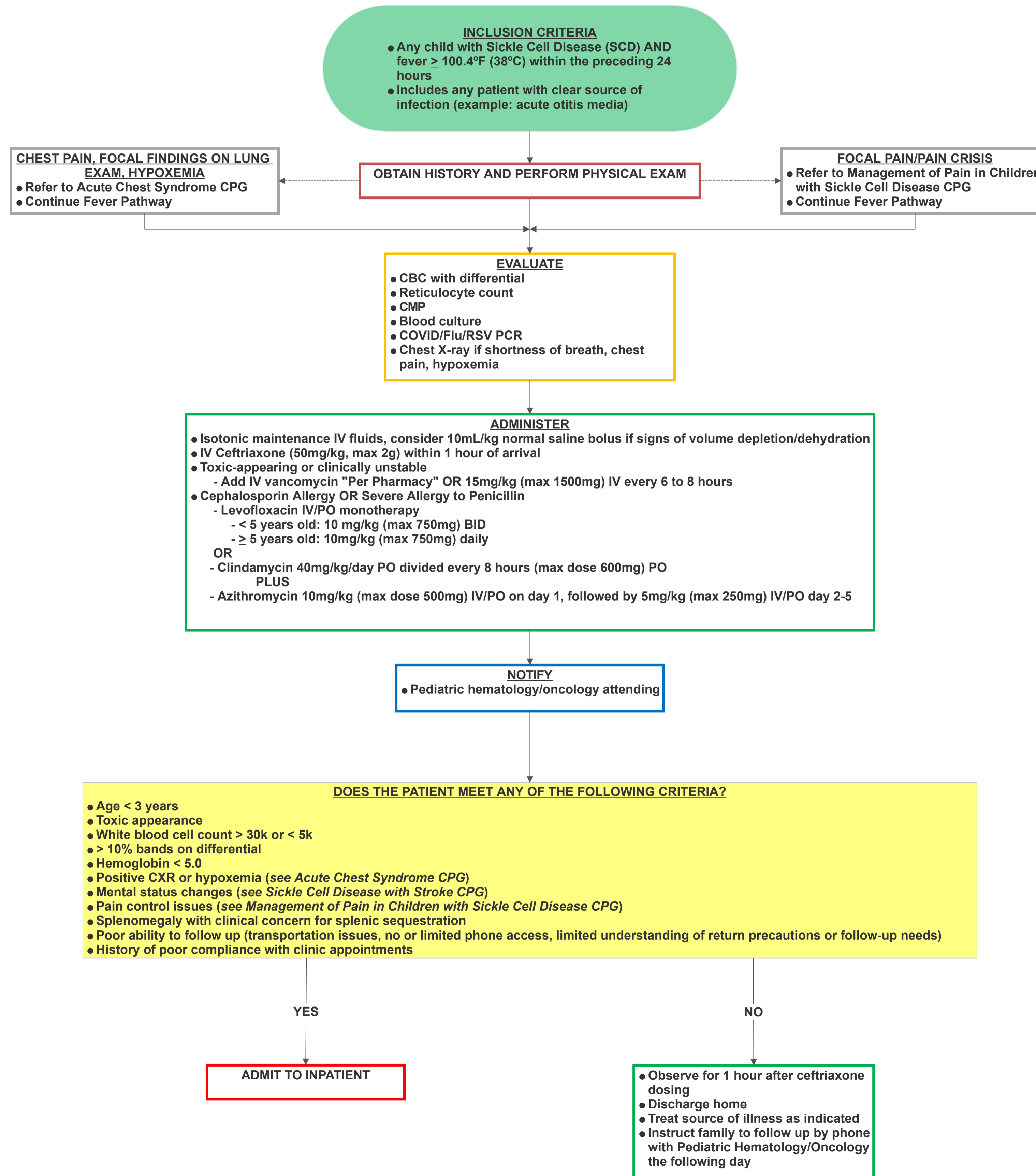


Evaluation and Management of Fever in Patients with Sickle Cell Disease – Emergency Department

Clinical Practice Guideline

Approved by SSM Health Cardinal Glennon Clinical
Practice Guidelines Committee July 27, 2023

Emergency Department Evaluation and Management of Fever in Children with Sickle Cell Disease Clinical Practice Guideline



**SSMHealth Cardinal Glennon
Access Center Transfer Line
888-229-2424**

[1. SSMHealth Cardinal Glennon CPG Home](#)

Owners/Authors (Department)
Lily Dolatshahi, MD (Pediatric
Hematology/Oncology)

**Approved by SSM Health Cardinal Glennon Clinical
Practice Guidelines Committee July 27, 2023**
Committee Chair: Andrew Ellis, MD
(Andrew.Ellis@ssmhealth.com)

[Disclaimer](#)
[Terms of Use](#)