

Non-Accidental Trauma in Patients < 36 months of Age

Clinical Practice Guideline

Approved by SSM Health Cardinal Glennon Clinical
Practice Guidelines Committee October 26, 2023

Non-Accidental Trauma in Pediatric Patients Clinical Practice Guideline

SSMHealth Cardinal Glennon
 Access Center Transfer Line
888-229-2424

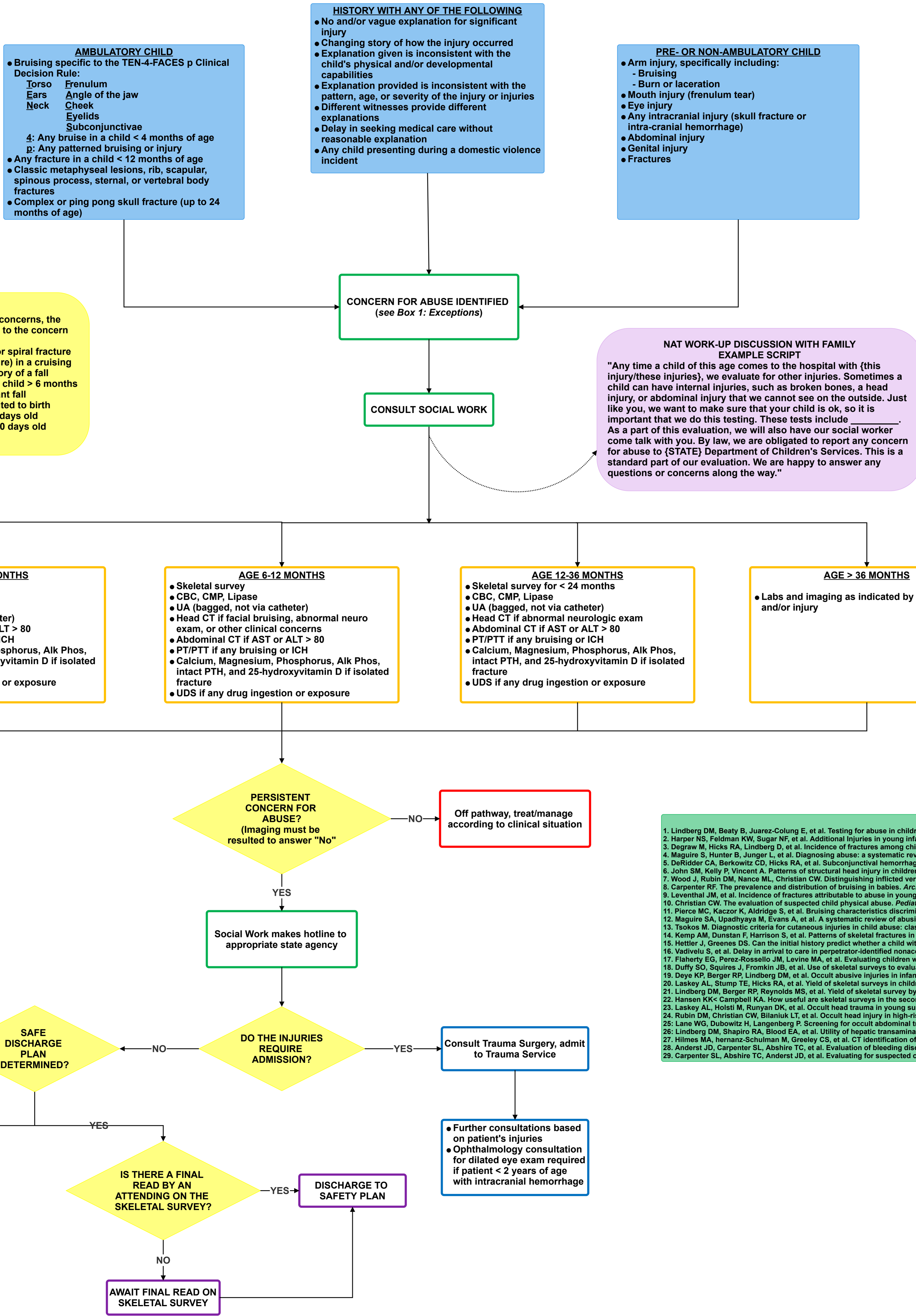
1. SSMHealth Cardinal Glennon CPG Home

2. Resources - See Box 2 Below

Owners/Authors (Department)
 Timothy Kutz, MD (Child Abuse Pediatrics)
 Steven Laffey, MD (Pediatric Emergency Medicine)
 Michael Schildz, MD (Pediatric Emergency Medicine)
 Christopher Blewett, MD (Pediatric Trauma Surgery)
 Tiffany Taylor, RN (Trauma Surgery Program Manager)

Approved by SSM Cardinal Glennon Clinical Practice Guidelines Committee October
 26, 2023
 Committee Chair: Andrew Ellis, MD (Andrew.Ellis@ssmhealth.com)

Disclaimer
 Terms of Use



Box 1: Exceptions
 In conjunction with no other clinical concerns, the following injuries may be exceptions to the concern for abusive injury:
 • Distal radius/ulna buckle fracture or spiral fracture of the tibia/fibulas (Toddler's fracture) in a cruising child > 9 months of age with a history of a fall
 • Linear, unilateral skull fracture in a child > 6 months of age WITH a history of a significant fall
 • Clavicle fracture most likely attributed to birth
 - Acute fracture in infants < 22 days old
 - Healing fracture in infants < 30 days old

**NAT WORK-UP DISCUSSION WITH FAMILY
 EXAMPLE SCRIPT**
 "Any time a child of this age comes to the hospital with (this injury/these injuries), we evaluate for other injuries. Sometimes a child can have internal injuries, such as broken bones, a head injury, or abdominal injury that we cannot see on the outside. Just like you, we want to make sure that your child is ok, so it is important that we do this testing. These tests include _____. As a part of this evaluation, we will also have our social worker come talk with you. By law, we are obligated to report any concern for abuse to (STATE) Department of Children's Services. This is a standard part of our evaluation. We are happy to answer any questions or concerns along the way."

BOX 2: RESOURCES

- Lindberg DM, Beaty B, Juarez-Colunga E, et al. Testing for abuse in children with sentinel injuries. *Pediatrics*. 2015;136:831-8.
- Harper NS, Feldman KW, Sugar NF, et al. Additional injuries in young infants with concern for abuse and apparently isolated bruises. *J Pediatr*. 2014;165:383-8.
- Degraw M, Hicks RA, Lindberg D, et al. Incidence of fractures among children with burns with concern regarding abuse. *Pediatrics*. 2010;125:e295-9.
- Maguire S, Hunter B, Junger L, et al. Diagnosing abuse: a systematic review of torn frenum and other intra-oral injuries. *Arch Dis Child*. 2008;92:1111-7.
- DeRidder CA, Berkowitz CD, Hicks RA, et al. Subconjunctival hemorrhages in infants and children: a sign of non-accidental trauma. *Pediatr Emerg Care*. 2013;29:222-6.
- John SM, Kelly P, Vincent A. Patterns of structural head injury in children younger than 3 years: a ten-year review of 519 patients. *J Trauma Acute Care Surg*. 2013;74:276-81.
- Wood J, Rubin DM, Nance ML, Christian CW. Distinguishing inflicted versus accidental abdominal injuries in young children. *J Trauma*. 2005;59:1203-8.
- Carpenter RF. The prevalence and distribution of bruising in babies. *Arch Dis Child*. 1999;80:363-6.
- Leventhal JM, et al. Incidence of fractures attributable to abuse in young hospitalized children: results from analysis of a United States database. *Pediatrics*. 2008;122:599-604.
- Christian CW. The evaluation of suspected child physical abuse. *Pediatrics*. 2015;135:e1337-54.
- Pierce MC, Kaczor K, Aldridge S, et al. Bruising characteristics discriminating physical child abuse from accidental trauma. *Child Abuse Negl*. 2013;37:430-45.
- Maguire SA, Upadhyaya M, Evans A, et al. A systematic review of abusive visceral injuries in childhood - their range and recognition. *Child Abuse Negl*. 2013;37:430-45.
- Tsokos M. Diagnostic criteria for cutaneous injuries in child abuse: classification, findings, and interpretation. *Forensic Sci Med Pathol*. 2015;11:235-42.
- Kemp AM, Dunstan F, Harrison S, et al. Patterns of skeletal fractures in child abuse: a systematic review. *BMJ*. 2008;337:a1518.
- Hettler J, Greenes DS. Can the initial history predict whether a child with a head injury has been abused? *Pediatrics*. 2003;111:602-7.
- Vadivelu S, et al. Delay in arrival to care in perpetrator-identified nonaccidental head trauma: observations and outcomes. *World Neurosurg*. 2015;84:1340-6.
- Flaherty EG, Perez-Rossello JM, Levine MA, et al. Evaluating children with fractures for child physical abuse. *Pediatrics*. 2014;133:e477-89.
- Duffy SO, Squires J, Fromkin JB, et al. Use of skeletal surveys to evaluate for physical abuse: analysis of 703 consecutive skeletal surveys. *Pediatrics*. 2011;127:e47-52.
- Deye KP, Berger RP, Lindberg DM, et al. Occult abusive injuries in infants with apparently isolated skull fractures. *J Trauma Acute Care Surg*. 2013;74:1553-8.
- Laskey AL, Stump TE, Hicks RA, et al. Yield of skeletal surveys in children < 18 months of age presenting with isolated skull fractures. *J Pediatr*. 2013;162:86-9.
- Lindberg DM, Berger RP, Reynolds MS, et al. Yield of skeletal survey by age in children referred to abuse specialists. *J Pediatr*. 2014;164:1268-73.
- Hansen KK, Campbell KA. How useful are skeletal surveys in the second year of life? *Child Abuse Negl*. 2009;33:278-81.
- Laskey AL, Holisti M, Runyan DK, et al. Occult head trauma in young suspected victims of physical abuse. *J Pediatr*. 2004;144:719-22.
- Rubin DM, Christian CW, Bilaniuk LT, et al. Occult head injury in high-risk abused children. *Pediatrics*. 2003;111:1382-6.
- Lane WG, Dubowitz H, Langenberg P. Screening for occult abdominal trauma in children with suspected physical abuse. *Pediatrics*. 2009;124:1695-602.
- Lindberg DM, Shapiro RA, Blood EA, et al. Utility of hepatic transaminases in children with concern for abuse. *Pediatrics*. 2013;131:268-75.
- Hilmes MA, hernanz-Schulman M, Greeley CS, et al. CT identification of abdominal injuries in abused pre-school-age children. *Pediatr Radiol*. 2011;41:643-51.
- Anderst JD, Carpenter SL, Abshire TC, et al. Evaluation of bleeding disorders in suspected child abuse. *Pediatrics*. 2013;131:e1314-22.
- Carpenter SL, Abshire TC, Anderst JD, et al. Evaluating for suspected child abuse: conditions that predispose to bleeding. *Pediatrics*. 2013;131:e1357-73.