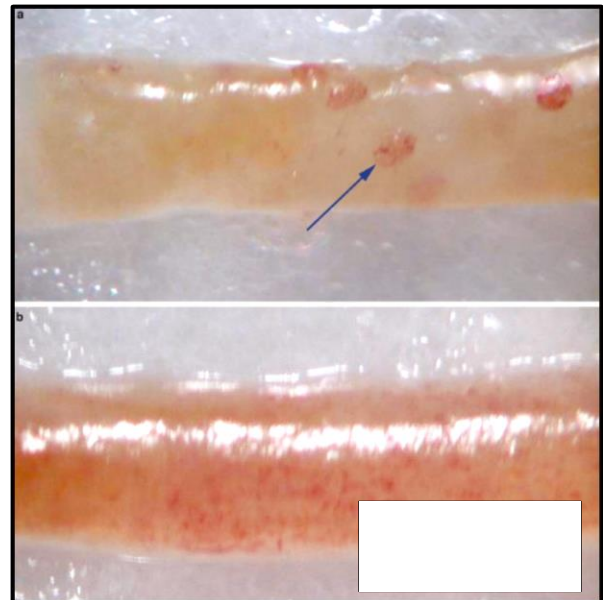
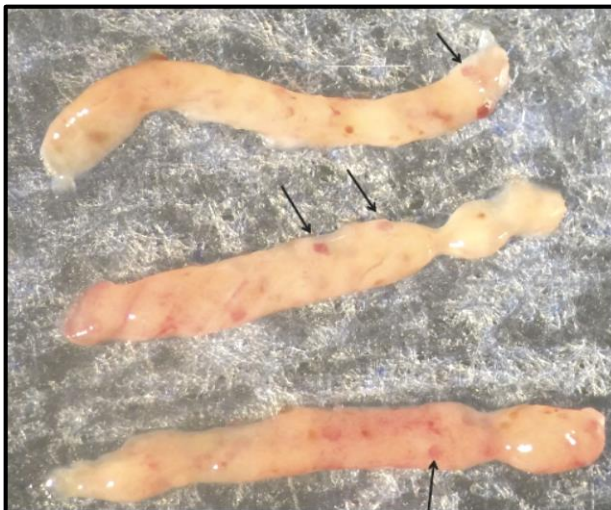
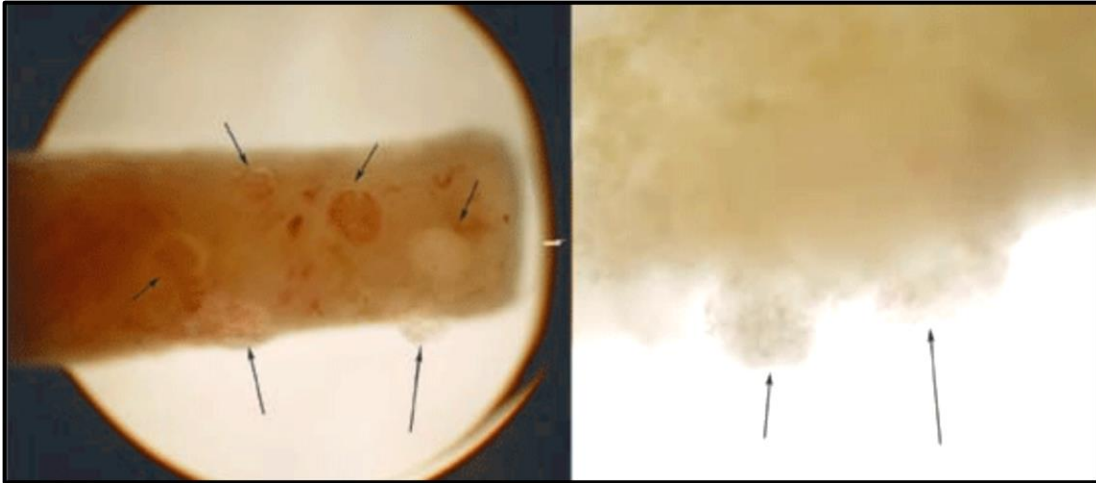


## How to Identify Glomeruli

Place the tissue core on saline moistened telfa or a glass slide and examine with a dissecting microscope or hand lens. Glomeruli appear as red raised or pale nodules or circular reddish areas (see figures below, all arrows identify glomeruli).



### **A few notes:**

1. Do **NOT** let the tissue dry out.
2. Be careful when using forceps – they can cause crush injury to the tissue.
3. If the specimen has to sit, due to an unexpected delay, make sure it is wrapped with telfa moistened with saline and refrigerated.