

# 2025-2027

Community Health Needs  
Implementation Strategy

**SSM Health St. Mary's Hospital – Madison**

700 S. Brooks St. | Madison, WI 53715



# Message to our community

*At SSM Health St. Mary's Hospital - Madison, we follow the path inspired by our founding Franciscan Sisters of Mary. When they arrived in St. Louis from Germany more than 150 years ago, the sisters cared for the sick regardless of their ability to pay. Today we carry on the legacy built by our founding sisters by caring for the needs of our communities and working toward health equity for all.*

*We know 80 percent of the factors that impact people's health are beyond the walls of our healthcare facilities – factors including socioeconomic status, education, employment, and physical environment. When we work with others to improve those conditions, we empower all our families, friends, and neighbors to live their healthiest lives. We are grateful for our partnership with other healthcare organizations in our community as part of the Healthy Dane Collaborative, which helps to support our healing Mission.*

*Over the past year, we, along with the other members of the Healthy Dane Collaborative, conducted a comprehensive Community Health Needs Assessment (CHNA) to identify the most critical health needs in the communities we serve. This assessment included community perception surveys, interviews with key health officials, community discussion forums and robust community health data analysis. During this data collection we ensured that a diversity of voices were heard, including those from marginalized populations.*

*This analysis helped us to identify the most significant areas of need for our community, and the areas in which St. Mary's Hospital can make the most impact. The priorities we will continue to address over the next three years are:*

- *Mental Health and Substance Use*
- *Reproductive Justice*
- *Injury and Safety*
- *Chronic Conditions*

*We will use these priorities to further collaborate with our community partners to support and improve the lives and health of Dane County overall. We recognize that these relationships are the building blocks to developing innovative strategies that produce impactful health outcomes. These partnerships will help us to achieve our vision of peace, hope and health for every person, family and community, especially those most in need. Please visit [ssmhealth.com](http://ssmhealth.com) to learn more about how we will continue to make a difference in the communities we serve.*

*Sincerely,*



*Eric Thornton  
President | SSM Health St. Mary's Hospital - Madison*



# Executive Summary

## Background

SSM Health St. Mary's Hospital – Madison is pleased to present the 2025-2027 Community Health Improvement Plan (CHIP) as a response to the 2024 Community Health Needs Assessment (CHNA) conducted from January-September 2024. The CHNA report provides an overview of the health needs and priorities associated with our service area with a goal of providing our community with a deeper understanding of current health needs, to help guide the hospital in its community benefit planning efforts and to develop an implementation strategy to address evaluated needs. The SSM Health Wisconsin Regional Board approved the 2024 CHNA on November 12, 2024.

The Affordable Care Act (ACA) requires 501(c)(3) tax-exempt hospitals to conduct a CHNA every three tax years and adopt a strategic implementation plan for addressing identified needs. The strategies adopted as part of the 2025-2027 Community Health Improvement Plan were carefully developed through the work of the Healthy Dane Collaborative, where SSM Health St. Mary's Hospital – Madison serves as an active member. The SSM Health Wisconsin Regional Board approved this Community Health Improvement Plan (CHIP) on February 25, 2025.

## Priorities

The Healthy Dane Collaborative determined priorities for the 2025-2027 Community Health Improvement Plan (CHIP) which include:

- **Mental Health and Substance Use:** Local resources include Madison and Dane County Public Health, Virtual Behavioral Health Team, Care for Caregiver Program, WI Society of Addiction Medicine
- **Reproductive Justice:** Local resources include Dane County Health Council, Foundation for Black Women's Wellness, Equity by Design, Black Maternal and Child Health Alliance, Diverse CHW and Doula workforce
- **Injury and Safety:** Local resources include Safe Communities, Dane County Falls Coalition, Focused Interruption, Jakob Swag Got Your Back App, Zero Suicide Framework
- **Chronic Conditions:** Local resources include Perry Family Free Clinic, Specialty Care Free Clinic, Our Lady of Hope Clinic, Access Community Health Center, River Food Pantry, Second Harvest, REAP Food Group, Parish Nurses

## Strategies

Though there are many initiatives SSM Health is focused on to support our community, these are the key initiatives identified to address the top health priorities from the 2024 Community Health Needs Assessment.

### **Mental Health and Substance Use**

- Providing support and access to care to improve behavioral health outcomes for all Dane County residents.

### **Reproductive Justice:**

- Achieving healthy birth outcomes for Black birthing people in Dane County.

### **Injury and Safety**

- Preventing injury and promoting safety among Dane County residents specifically focusing on aging adults and youth.

### **Chronic Conditions:**

- Reducing chronic conditions by improving access to care and addressing the social drivers of health.

# Table of contents

## **Introduction**

About SSM Health	Page 5
Healthy Dane Collaboration and Community Partners	Page 6

## **Community Health Improvement Process** **Page 7**

## **Community Health Priorities** **Page 9**

Cross Cutting Themes	Page 11
----------------------	---------

## **Improvement Strategies** **Page 12**

Mental Health	Page 12
Substance Use	Page 14
Injury and Safety	Page 14
Reproductive Health	Page 15
Chronic Conditions: Food Security	Page 16
Chronic Conditions: Access	Page 17
Data Crosswalk	Page 18
Place-Based Investing	Page 19
Care for Creation	Page 20

## **Appendices** **Page 21**

Appendix A: CHNA Report and Healthy Dane Website	Page 22
Appendix B: Frameworks and References	Page 23

# About SSM Health and St. Mary's Hospital - Madison

## SSM Health

Nationally recognized for quality and innovation, SSM Health is a Catholic, not-for-profit, fully integrated health system working to advance health equity and empower all people to achieve their full potential.

With care delivery sites in Illinois, Missouri, Oklahoma, and Wisconsin, SSM Health provides convenient access to high-quality community-based services as well

as world-class academic medicine, clinical trials, and research studies. The organization's footprint includes hospitals, physician offices, outpatient and virtual care services, comprehensive home care, senior care, and hospice services, a fully transparent pharmacy benefit company, a health insurance company, and an accountable care organization. As one of the largest employers in every community it

serves, the organization's 40,000 team members and 13,900 providers are dedicated to fulfilling SSM Health's Mission: "Through our exceptional health care services, we reveal the healing presence of God." Like our founding sisters, we care deeply for our communities -- SSM Health reported \$470 million in community benefit in 2023, including \$346 million in uncompensated care.

Through our exceptional health care services, we reveal the healing presence of God.

## SSM Health St. Mary's Hospital – Madison

### Highlight of services

Serving South Central Wisconsin since 1912, SSM Health St. Mary's Hospital - Madison is an American College of Surgeons-verified Level II Trauma Center and a Joint Commission-certified Thrombectomy-Capable Stroke Center. We offer a full range of inpatient and outpatient treatment and diagnostic services using the latest medical advances. From pediatrics to senior health, we take the time to listen and understand the needs of all our patients while providing individualized, patient-centered care.

### Community benefit

In 2023, St. Mary's Hospital provided \$28,360,355 in total community benefit..

Examples of our community benefit programs include:

- Community Health Improvement
- Health Professions Education
- Subsidized Health Service Lines
- In Kind Community support
- Financial Assistance to Patients

### Awards and Certifications

- CMS Five-Star Rating
- U.S. News & World Report Best Hospital for 2024-2025
- Healthgrades Outstanding Patient Experience Award
- University of Wisconsin Organ and Tissue Donation Award of Hope and Excellence in Tissue Donation Award

## Hospital at a glance

Admissions	18,099
Outpatient visits	54,820
ER visits	41,011
Births	1,888
Beds	440
Employees	3,574
Medical staff	1,160
Volunteers	260
Charity care	2,358,540

# Community Partners and Roles

The Healthy Dane Collaborative is a coalition made up of four hospitals in Dane County including SSM Health St. Mary's Hospital – Madison, Stoughton Health, Unity Point Health – Meriter, and UW Health; Group Health Cooperative of South-Central WI and Public Health Madison and Dane County. Healthy Dane was created to show how hospitals and the local health department can work together to improve health for all people living in Dane County. We know that some health issues are too big for one group to handle, which is why we are committed to working together with local nonprofits and organizations who serve those who live, work and play in Dane County to first listen, and then find a solution that meets our community's health needs.

## Healthy Dane Collaborative Partners

- Madison and Dane County Public Health
  - Justin Svingen
  - Sandra Bogar
- SSM Health St. Mary's Hospital – Madison
  - Megan Timm
- Stoughton Health
  - Kelly Perna
  - Laura Mays
- UnityPoint Health - Meriter
  - Corinda Rainey-Moore
  - Jennifer Vohs
  - Jessika Kasten
- UW Health
  - Adrian Jones
  - Anupama Bhalla
  - Shawn Koval

## Community Partners who shared input:

- Briarpatch Youth Services
- Centro Hispano
- Focused Interruption
- GSAFE
- Homeless Service Consortium
- Madison Metro School District
- Meadowood Health Partnerships
- MTZ Charitable Organization
- Reach Dane
- Rebalanced Life Wellness Association
- River Food Pantry
- Safe Communities
- Safe Kids Coalition
- SPASD School Student Services Team
- Urban Triage
- Community members at large

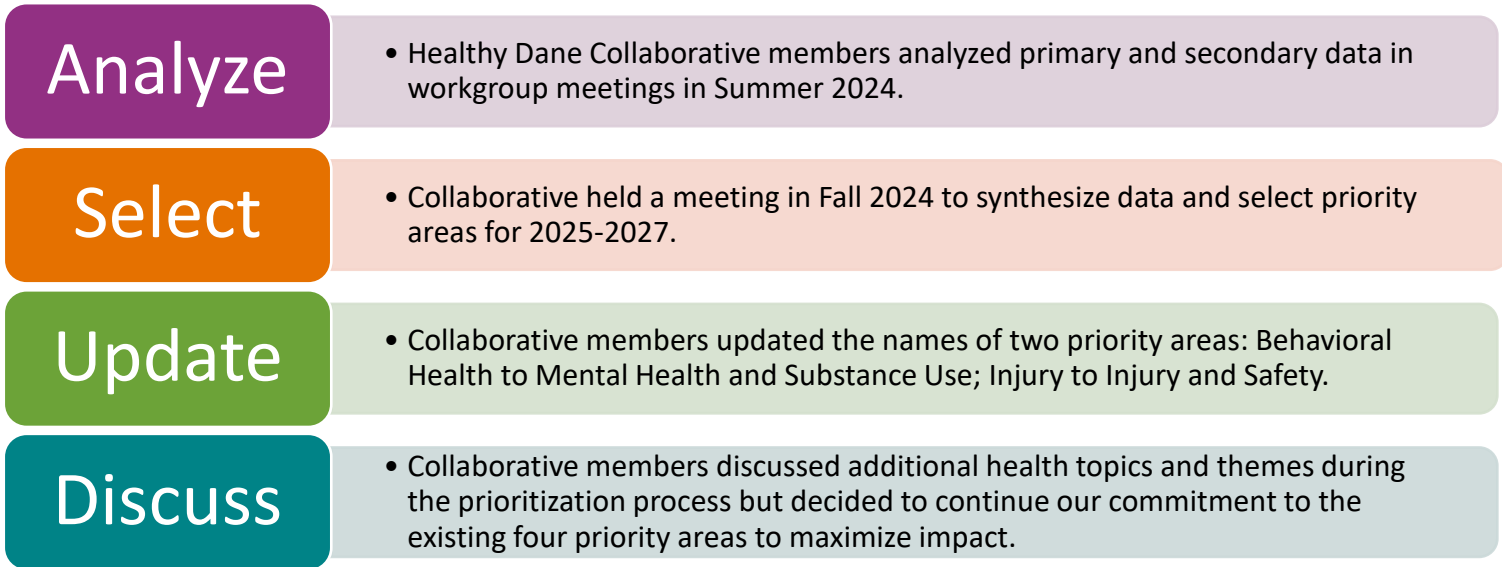


# Community Health Improvement Process

The steps SSM Health St. Mary's Hospital – Madison utilized to develop the CHIP are outlined below.

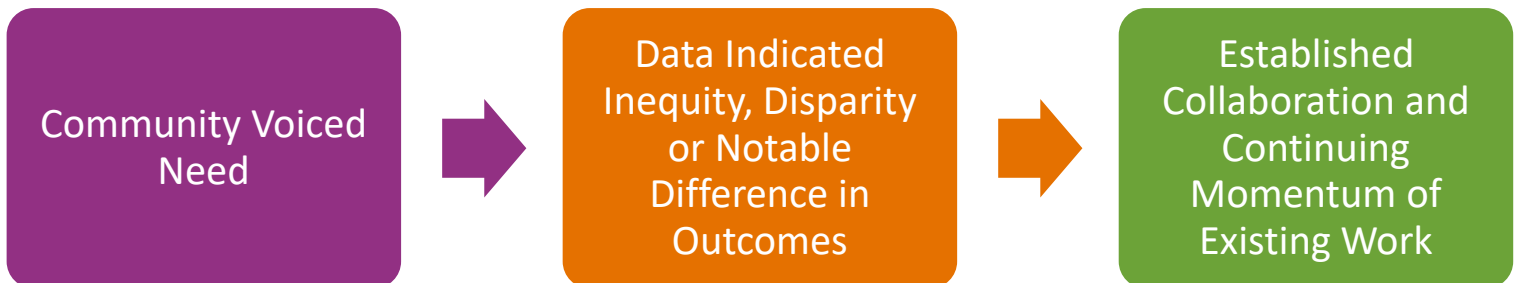
## Prioritization Process

**Goal:** Collectively identify key issues impacting our communities using the 2024 CHNA data findings and determine prioritization criteria for determining top priorities for 2025-2027 Improvement Plan.



## Identify CHIP Priority Areas

**Goal:** Collectively identify the top priority areas for the 2025-2027 Community Health Improvement Plan using the following criteria. *Note that areas identified with the greatest inequities were weighted the highest when prioritizing health needs.*

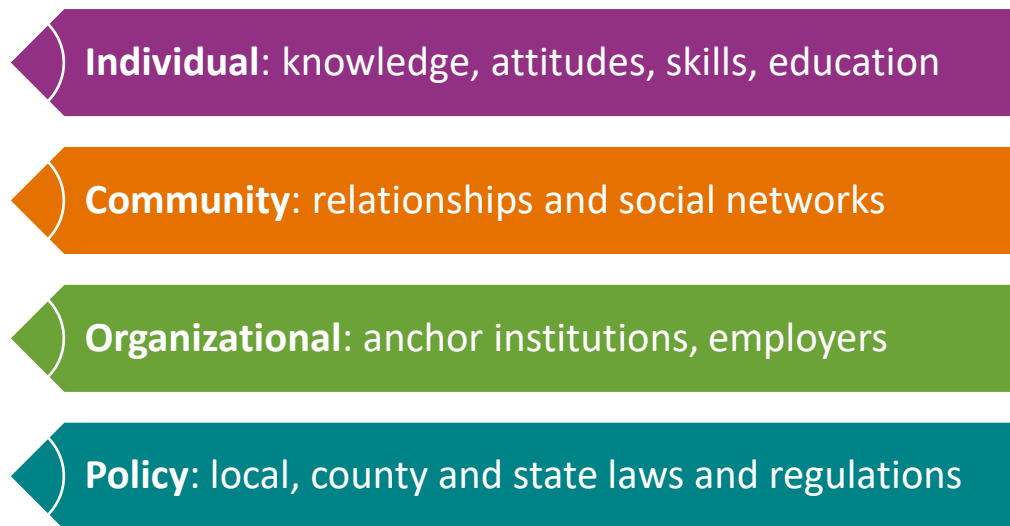


# Community Health Improvement Process

## Develop and Implement Action Plans

**Goal:** Create plans to reflect the selected approaches and actions that details the milestones and responsibilities to achieve goals.

- Using components found in the socio-ecological model and framework, each strategy and initiative can be categorized as one of the following levels of intervention.



## Monitor and Evaluate the CHIP

**Goal:** Utilize ongoing evaluation methods to monitor the progress of the CHIP and modify as needed.

- Process and outcome measures will be identified and monitored to identify changes related to CHIP activities.
- CHIP strategies will be tracked for each priority area to show progress of each activity.

Tools from the plan-do-study-act cycle are used to plan and manage CHIP work. The “plan” and “do” stages reflect action plan development and implementation. “Study” and “act” stages reflect the ongoing monitoring and evaluation of CHIP activities.

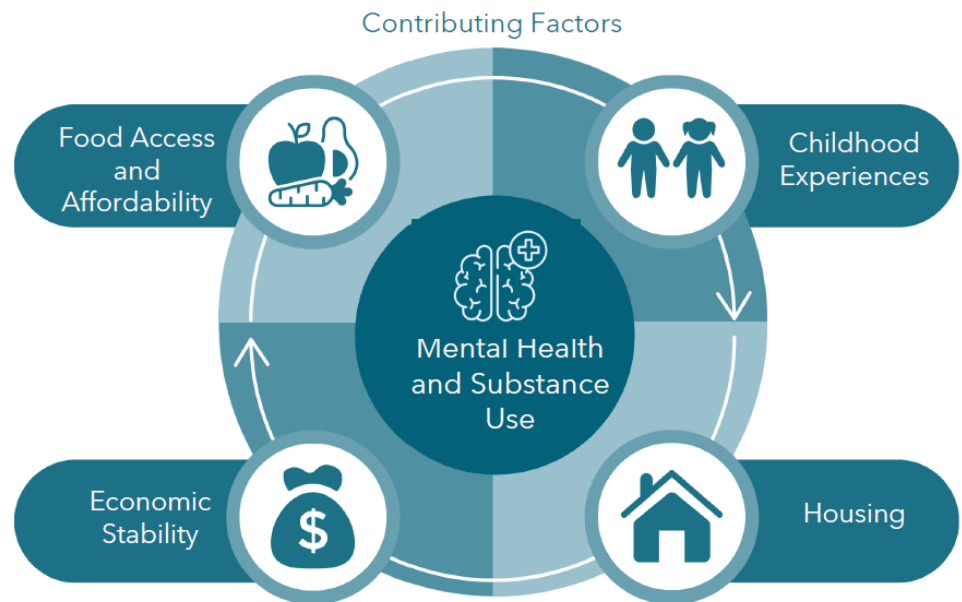


# 2025-2027 Health Priority Areas

## Priority: Mental Health | Substance Use

### Key Strategies

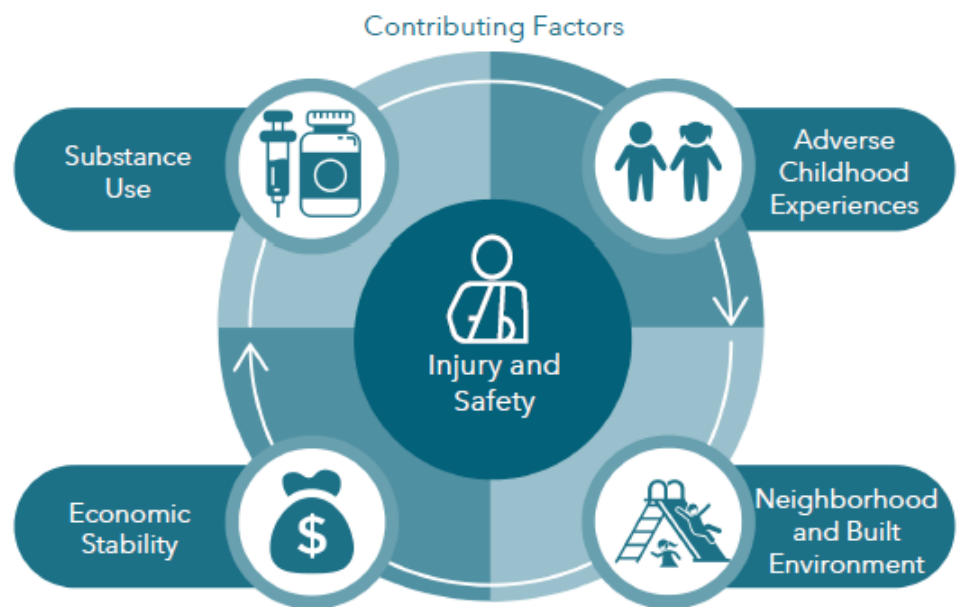
- Strengthen the Mental Health Workforce.
- Increase Access to Affordable Mental Health Services.
- Provide education and support for substance use prevention with a special emphasis on youth in Dane County.



## Priority: Injury and Safety

### Key Strategies

- Increase opportunities for education and resources to prevent injuries.
- Reduce fall-related events which rank second for top reasons for EMS dispatch in Dane County.

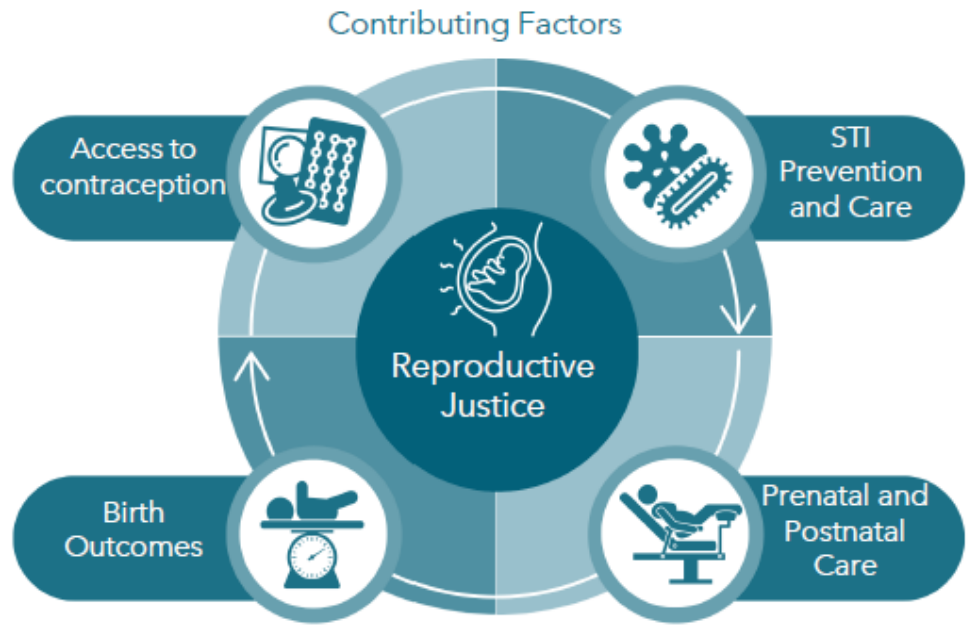


# 2025-2027 Health Priority Areas

## Priority: Reproductive Justice

### Key Strategies

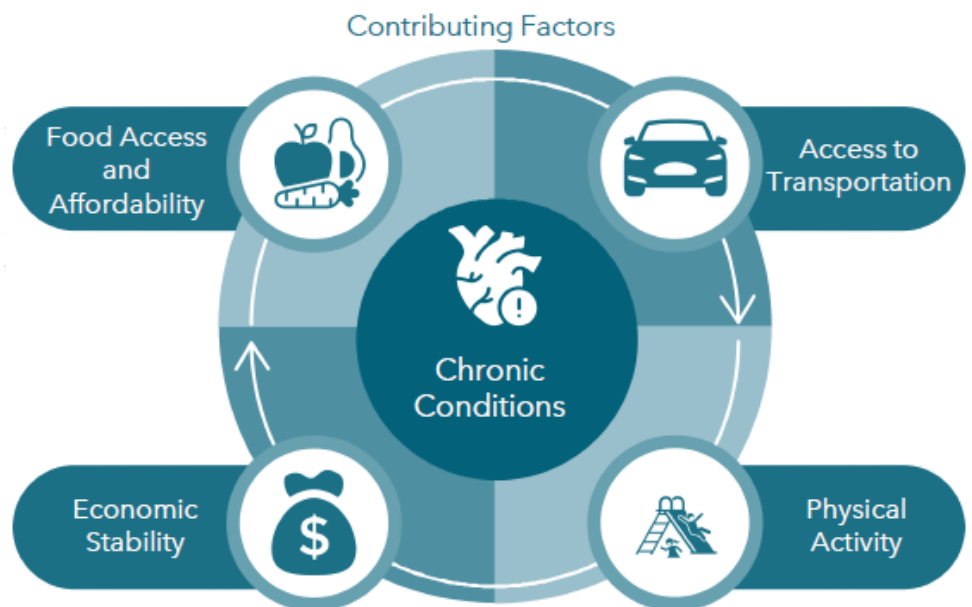
- Improve access to care and birth outcomes for Black birthing people in Dane County through Saving our Babies initiative.
- Provide support and resources to patients who are at risk for the social drivers of health.



## Priority: Chronic Conditions

### Key Strategies

- Increase access to healthy food for community members impacted by food insecurity.
- Improve access to affordable and culturally appropriate preventative care for patients.



# 2025-2027 Cross-Cutting Themes

Through the community input and data review process, we learned about several other topics that impact our communities related to the top health priorities. Strategies in this Implementation Plan will consider these cross-cutting themes and we will continue to look for opportunities to address these issues.

Access to  
Care 

Preventative  
Health 

Housing 

Transportation 

Food  
Security 



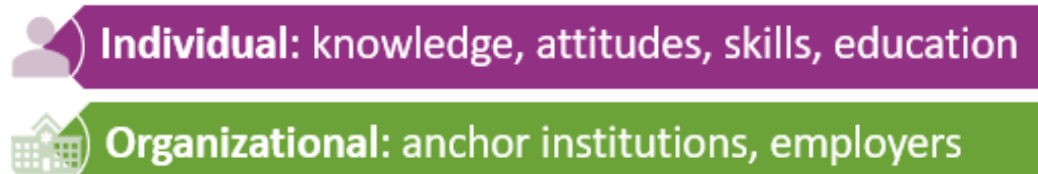
# Mental Health: Increase Access to Mental Health Support and Services

Forty percent of Wisconsinites experienced poor mental health at some point during the past month (CDC) and the need for mental health services has been on the rise nationally. Dane County is not immune to this trend as seen throughout the 2024 CHNA methods citing affordability as a barrier. While policies around insurance coverage are typically determined at the state or national level, this goal focuses on local strategies that can influence access to affordable mental health services.

## Virtual Behavioral Health Integration (VBHI)

At SSM Health in Wisconsin, we listened to our communities sharing that access to affordable mental health services was hard to find. In 2023, SSM Health launched the Virtual Behavioral Health Integration program in Family Medicine and Internal Medicine practices for patients 18+ in over 71 clinics across our system.

This program was intentionally designed to support any patient needing support by providing telephonic mental health coaching, focusing on current concerns and goals of each unique patient such as grief and loss, substance use, stress management, and more. Most importantly, this program is free to SSM Health patients. Since the launch of the Virtual Behavioral Health Integration to our primary care clinics, the team has supported over 16,000 in the SSM Health Wisconsin region.



# Mental Health | Strengthen Mental Health Workforce

According to the Health Resources and Services Administration (HRSA) in 2024, part of Dane County is considered a mental health shortage areas. (HRSA, 2024) Attracting and retaining an adequate mental health workforce is a challenge due to varying factors such as low reimbursement rates, a high demand for mental health services, and the stress/emotional toll of the work which can lead to burnout and high turnover rates. Addressing gaps in the workforce and providing alternate routes of care can help improve the mental health workforce.

## Care for Caregivers

Studies show 50% of healthcare providers are emotionally impacted by an event at least once in their career. At SSM Health, we recognize that caring for others can potentially place our team members' emotional well-being at risk. This includes an unanticipated event or injury – such as workplace violence, the unexpected loss of a patient, a complicated interaction with another person, priority and competing projects, and compassion fatigue. These all may have potential lasting traumatic effects. Now more than ever, we must care for our team members in the most effective way possible. Care for Caregivers is designed to provide support to our team members, when they need it most.



**Organizational:** anchor institutions, employers

## Advocacy for Strengthening the Mental Health Workforce

SSM Health recognizes that public policy can sometimes be the key to improving access to mental health in Wisconsin. In the past, we have supported multi-state compacts that allow for us to draw on resources from other providers in our system to meet the needs of the communities here in Wisconsin. In the last legislative session, SSM Health supported a proposal entering Wisconsin into the Counseling Compact which now includes 37 states. In 2025 and 2026, we will continue these efforts to increase access to care by advocating for Wisconsin's entry into the Social Work Compact with an eye on emerging inter-state compacts.

We will continue to work with policymakers and stakeholders to ensure that we are making a difference for the communities we serve. Increasing access to care and funding for these services is crucial to improving the lives and creating better outcomes. We will also focus on growing the workforce to meet the very present need for services. Whether it's streamlining state licensure, removing unnecessary barriers, or improving the on the requirements necessary to begin practicing in Wisconsin, SSM Health will work to increase the number of providers in our communities.



**Policy:** local, county and state laws and regulations

# Substance Use: Provide Support and Education

## HOPE Kits and Narcan Vending Machine

As part of the WI Society of Addiction Medicine (WISAM) Overdose Response Protocol (ORP) Project, SSM Health St. Mary's Hospital – Madison Emergency Department is implementing the HOPE kit initiative in an effort to prevent overdoses in Dane County. Each kit includes two doses of Narcan nasal spray, fentanyl test strips, a CPR mask, and educational pamphlets: *Safer Drug Use, We Can All Save a Life: Overdose Prevention and Always Have Narcan Within Reach*. Additionally, St. Mary's Hospital - Madison will be installing a Narcan Vending Machine near the hospital parking ramp and bus stop for ease of access in 2025.



Individual: knowledge, attitudes, skills, education

# Injury and Safety: Build Safe Communities

## Fall Prevention Education

In 2022, 2,080 Dane County residents were hospitalized due to an injury and of those hospitalizations 1,081 were due to an unintentional fall-related injury with 74% (797) being patients ages 65+ (WISH). In partnership with Safe Communities and Falls Free Dane Coalition, St. Mary's Hospital – Madison will support fall prevention education and support to aging adults in Dane County.



Individual: knowledge, attitudes, skills, education

## Promote suicide prevention resources in our communities

The **Got Your Back app**, provided by the Jakob Swag Foundation in Green County, Wisconsin is a mental health and suicide prevention app equipped with support systems, resources and tools for monitoring and supporting youth in navigating their own mental health. SSM Health financially sponsors this app and will continue to disseminate to area schools for awareness.



Community: relationships and social networks

## Zero Suicide Framework



© 2020 Zero Suicide Institute at EDC.

Zero Suicide is a transformational framework for healthcare systems with the foundational belief that suicide deaths for individuals under the care of health and behavioral health systems are preventable. The assessment strives to improve patient safety with seven elements to assist the implementation of Zero Suicide in a health system. As part of the 2025-2027 improvement plan, SSM Health of Wisconsin will conduct a region-wide Zero Suicide assessment utilizing the practical toolkit to guide our healthcare system into change.



Organizational: anchor institutions, employers

# Reproductive Health: Saving our Babies

Wisconsin consistently ranks as one of the worst states in the nation for Black infant mortality and maternal mortality is currently 3X higher for Black women than white women. In fact, our Black infants are 2.6X more likely to die before their first birthday. The Black maternal and infant health crisis is not the result of one failed system or sector, but the lack of a coordinated approach to meet the unique needs of Black families.

## Saving our Babies and Connect Rx

St. Mary's Hospital – Madison takes part in the essential work of the Dane County Health Council. Our vision is that all Dane County residents will have optimal health and well-being through our mission: **The Dane County Health Council works to eliminate gaps and barriers to optimal health and reduce disparities in health outcomes.**

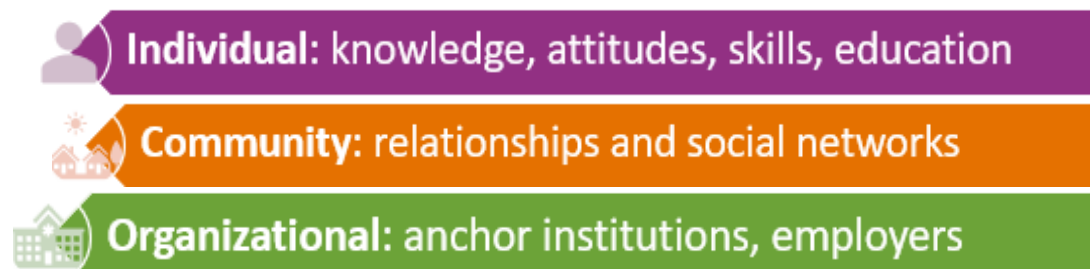
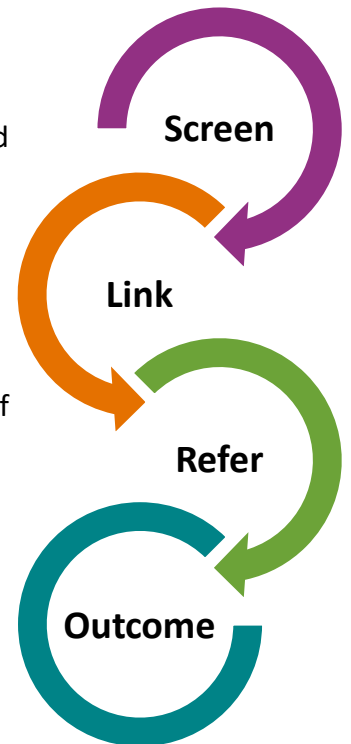
Saving our Babies is a community-driven initiative that promotes a collective impact response to the Black maternal and child health crisis we are experiencing. This initiative is helping the Dane County Health Council uncover the causes and solutions to low birth weight as a leading cause of early infant death. We know the importance of community voice which is why this initiative approached the community with a shared agreement that there would be **Nothing About Us, Without Us.**

### Key Strategies:

- Black Centered Engagement and Leadership
- Universal Risk Screening of Social Determinants of Health
- Community Resource Coordination and Navigation Workflows
- Closed-loop referral system
- Representative Workforce

### Outputs since 2022

- 12,000+ Screenings
- 396 Connect Rx births
- 93% optimal gestational age
- 93% healthy birth weight



## Advocating for Postpartum Expansion

Wisconsin is one of the few remaining states to not have adopted 12-month Medicaid postpartum coverage. At SSM Health, we know that when healthcare is interrupted during the postpartum period, a mother runs the risk of having unmanaged pregnancy-related complications and may also lose access to critical mental health providers. Our organization, along with several others, believes that continuous Medicaid coverage during these 12 months is a key strategy to positively impact the rates of maternal morbidity and mortality.



# Chronic Conditions: Food Security

Chronic conditions last a year or more and require ongoing medical attention and/or may impact daily living activities. Many chronic conditions are affected by a variety of social and economic factors (SDOH) including access to exercise opportunities, food affordability and access to culturally appropriate healthcare. We know that a focus on prevention through screenings may help reduce chronic disease in our communities in the future.

## Basket of Hope Food Security Program



Food insecurity can be a leading cause of health problems. One out of 12 families in Wisconsin experience barriers to obtain enough food. Food insufficiency can have a long-term effect on healing and well-being. In January 2023 health screening began with patients in Family Care Suites and Birth Suites. Based on results, it became our hospital goal to provide an emergency food bag and community resources to 60% of our patients who screen high risk for food insecurities. The Basket of Hope Food Insecurity Program began on July 1, 2023.



The goal for this program is to provide immediate food to patients who screen high risk for food insecurity. In partnership with River Food Pantry in Madison, the bags are intended to provide food for approximately three days. Plus, we also provide educational material about local resources available to help with more permanent food security. Therefore, a list of 11 community resources is included in each bag.



In April 2024, the program expanded to the Behavioral Health department due to the high volumes of food insecure patients. In the 2025-2027 CHIP cycle, we will look to expand the Basket of Hope program to other departments and clinics throughout Dane County.

 **Individual:** knowledge, attitudes, skills, education

 **Organizational:** anchor institutions, employers

## Community Contributions to Address Food Security

SSM Health's commitment to addressing Food Insecurity in our communities is evident in our community partnerships and contributions. In 2024, St. Mary's Hospital – Madison financially supported area food pantries like River Food Pantry, Second Harvest Food Bank's Farm to School program, and REAP Food Group for building a healthier food system for Dane County. We will continue supporting our partners in providing access to affordable, healthy and culturally appropriate foods for Dane County community members.

 **Community:** relationships and social networks

# Chronic Conditions: Improving Access

## In-Kind Services to Free Clinics

SSM Health has a long history of supporting uninsured and under-insured patients in receiving access to preventative and specialty care. Through in-kind medical imaging services to Specialty Care Free Clinic and Access Community Health Centers and in-kind lab services to Perry Family Free Clinic and Our Lady of Hope Clinic, SSM Health is able to best meet the needs of these patients in the clinic they are most comfortable accessing. In 2024, the contribution of in-kind imaging and lab services totaled more than \$1.2 million.



**Community: relationships and social networks**

## Primary Care Access for Kids (PAK Program)

The PAK program provides access to preventative and primary care at no cost for all uninsured children in the Madison Metropolitan School District (MMSD). Since 2022, over 120 kids without health insurance were connected to a primary care provider at SSM Health. Moving forward, we know that access remains a challenge for families, therefore SSM Health will continue providing access to students to remove burden to families.



**Individual: knowledge, attitudes, skills, education**



**Community: relationships and social networks**

## Parish Nurse Program

Faith community nursing is a deeply rooted practice in the Catholic Church's healing tradition. Under the guidance of SSM St. Mary's Hospital – Madison, the Parish Nurse team, supports area ministries by assisting, supporting and educating with community members and parishioners who are facing acute and chronic conditions or needing system and program navigation support. Our Parish Nurses strive to meet physical, mental, spiritual and social needs, provide wellness education for the promotion of healthy lifestyles, and offer support in accessing healthcare services and resources for those in need. Currently, the SSM Health Parish Nurse team serve the following ministries in Dane and Jefferson Counties: Triangle Community Ministry, Our Lady Queen of Peace, Good Shepherd Catholic Church, and St. Francis of Assisi Catholic Parish.



**Individual: knowledge, attitudes, skills, education**



**Community: relationships and social networks**

# Alignment to State and National Initiatives: Strategy Crosswalk

This crosswalk serves as a guide for initiatives being addressed at the local, state, and national levels. The table is not an all-inclusive list of all initiatives. Rather, the crosswalk is a visual to help represent the alignment of the SSM Health St. Mary’s Hospital – Madison Community Health Improvement Plan (CHIP), Wisconsin’s State Health Improvement Plan (SHIP), and Healthy People 2030, the national objectives to improving health and well-being.

Objectives	SSM Health St. Mary’s Hospital Community Health Improvement Plan (CHIP)	WI State Health Improvement Plan (SHIP)	Healthy People 2030
<b>Mental Health:</b> Improve Access to Affordable Mental Health			
<b>Mental Health:</b> Strengthen Mental Health Workforce			
<b>Substance Use:</b> Increase Access to education and support systems			
<b>Reproductive Justice:</b> Reducing Infant Mortality in the Black Community			
<b>Injury and Safety:</b> Reduce Falls in Aging Adults			
<b>Injury and Safety:</b> Reduce suicide rates in Dane County			
<b>Chronic Conditions:</b> Access to Preventative Care			
<b>Chronic Conditions:</b> Access to Healthy Foods			

# Other Community Health Initiatives:

## Healthcare Anchor Network: Place-Based Investing

### Placed-Based Investment Program for Housing

The SSM Health Place-Based Investment (PBI) program strives to address health inequities and make a positive economic impact in the communities we serve. This initiative helps fill financing gaps in the marketplace by adding affordable and flexible capital for community projects that address upstream determinants of health, such as housing. Our key objectives:

		
Affordable and supportive housing	Transportation opportunities	Food System and healthy food and water access
		
Stable and well-paying employment opportunities	Renewable energy and energy efficiency	Support economic development in underserved communities

1. Creating positive and measurable social, economic, and environmental outcomes in service of people and the planet, with a specific focus on the geographies of our existing ministries, while preserving SSM Health’s financial capital.
2. Building a collaborative, ecologically sustainable system to become a valuable partner in directly improving the lives of those we serve in our communities through investment, especially for historically marginalized communities.
3. Strengthening the communities where SSM Health has a presence, including urban, suburban, and rural communities.
4. Actively engaging community members that will be impacted by place-based investments to ensure alignment with community members.
5. Cultivating partnerships with key civic and community leaders to inform shared priorities.



**Community:** relationships and social networks



**Organizational:** anchor institutions, employers

# Other Community Health Initiatives: Environmental Initiatives

## Care for Creation at SSM Health

Climate change presents one of the largest impacts to health today that will continue to perpetuate into the coming decades. SSM Health’s focus on environmental sustainability is an integral part of our Mission and Vision. Building upon our Franciscan heritage, we aim to become leading standards of our resources to provide exceptional care, not only for our patients, but the creation in which we live.

### Energy Star Ratings

A comprehensive approach to improve SSM Health’s impact on climate is dependent upon a wide array of contributing factors including energy utilization. The Energy Star Rating for Hospitals provided by the Environmental Protection Agency (EPA) is the leading national indicator to benchmark and gauge performance on hospital energy utilization. Facilities are scored on a scale of 1-100 indicating a percentile rank to the national population of similar property types.

As a hospital, achieving a positive Energy Star Rating means our buildings are more energy efficient than 75% of similar facilities nationwide, using 35% less energy and generating 35% less greenhouse gas emissions than typical buildings. In 2024, SSM Health of Wisconsin has four Energy Star certified hospitals with a sustained score over 75 including St. Mary’s Hospital – Madison, St. Mary’s Hospital – Janesville, St. Clare Hospital – Baraboo and Monroe Hospital.

### Reducing our Carbon Footprint

As part of SSM Health’s continued commitment to caring for our environment we will next be focused on reducing the overall system-wide carbon footprint by reducing emissions. From 2025-2027, we will be pursuing opportunities to purchase our energy from renewable resources and transition our fleet vehicles to EV/hybrid models.

### Tree Planting to Reverse Urban Deforestation

In Honor of Earth Day in 2024, SSM Health hospitals focused attention on planting trees along with other sustainability efforts such as recycling, seed distribution, environmental clean-up events and more. More than 13,000 trees have been planted with the help of SSM Health hospitals and team members in the past five years.



**Community:** relationships and social networks



**Organizational:** anchor institutions, employers

# 2025-2027

Appendices

**SSM Health St. Mary's Hospital - Madison**

700 S. Brooks St. | Madison, WI 53715

# Appendix A:

## Dane County Community Health Needs Assessment



### Healthy Dane Website

# HEALTHY DANE.ORG



[Healthy Dane Home](#)   [About Us](#)   [Contact Us](#)

[Data Dashboards](#)

[Demographics](#)

[Promising Practices](#)

[Topic Centers](#)

[Resource Library](#)

[Home](#) > [Community Dashboard](#)

### Community Health Dashboards

Learn about your community's health and wellness. Compare indicators for your community against state averages, county values, and target goals. Discover areas of excellence and improvement in your community.



# Appendix B: Frameworks and References

- American Hospital Association Health Equity  
<https://www.aha.org/type/transformation-action-planner>
- ChangeLab Solutions: Blueprint for Changemakers  
<https://www.changelabsolutions.org/product/blueprint-changemakers>
- Faith Community Nursing
  - <https://www.chausa.org/nursing/faith-community-nursing>
- Healthcare Anchor Network Playbook:  
<https://healthcareanchor.network/2024/10/anchor-mission-playbook-new-learnings-findings-in-anchor-mission-execution/>
- Healthy Dane website  
<http://healthydane.org/>
- Healthy People 2030  
<https://odphp.health.gov/healthypeople>
- Medicaid Postpartum Coverage Extension
  - <https://www.kff.org/medicaid/issue-brief/medicaid-postpartum-coverage-extension-tracker/>
- Saving our Babies
  - <https://www.savingourbabieswi.org/>
- Social Determinants of Health Framework and Tools  
<https://www.dhs.wisconsin.gov/publications/p03361.pdf>
- WI State Health Improvement Plan (SHIP)  
<https://www.dhs.wisconsin.gov/publications/p01791-2023.pdf>
- Zero Suicide Framework  
<https://zerosuicide.edc.org/about/framework>