



SSMHealth.

2025-2027

Community Health
Improvement Plan



SSM Health St. Louis - North Market

SSM Health DePaul Hospital - St. Louis

12303 DePaul Drive, Bridgeton, MO 63044

Table of contents

Introduction	pg. 2
Message to our community	
Executive summary	
About SSM Health	
<u>CHIP Process, Partners and Guiding Principals</u>	pg. 7
<u>Aligning with National, State and Regional Goals</u>	pg. 11
Identified Priorities	
<u>Behavioral Health</u>	pg. 13
<u>Food and Nutrition Security</u>	pg. 15
<u>Going Forward</u>	pg. 17
<u>Appendices</u>	
<u>Appendix A: St. Louis Region Community Health Improvement Plan Goals, Objectives and Activities</u>	pg. 19

Message to our community

SSM Health DePaul Hospital - St. Louis, member of SSM Health, is committed to providing exceptional, compassionate care to our community. Inspired by our founding Franciscan Sisters of Mary and guided by our Mission – Through our exceptional health care services, we reveal the healing presence of God – we cherish the sacredness and dignity of each person as demonstrated through our values of compassion, respect, excellence, stewardship and community.

The health and well-being of our community is a priority for all of us and we look forward to deepening our relationships with community partners to address the pressing needs in our community including the priorities identified in our Community Health Needs Assessment process: Behavioral Health and Food/Nutrition Security. The Community Health Improvement strategies and partnerships outlined in this report provide a strong roadmap for our engagement on these priorities moving forward over the next 3 years and beyond.

SSM Health and our individual hospital teams remain committed to providing exceptional care to each patient we care for and improving the health and well-being of the communities we serve.

Sincerely,



Deborah Berini
President
SSM Health DePaul Hospital - St. Louis



Executive summary

Under the Patient Protection and Affordable Care Act, SSM Health must undertake a process every 3 years focused on engaging with the communities we serve to identify community health needs, prioritizing those needs, and ultimately designing actionable strategies to impact the named priorities. The Community Health Needs Assessment (CHNA) and Community Health Improvement Plan (CHIP) are created and published to collectively reflect these efforts and provide a roadmap for continued collaboration with community in the coming 3 years to address our shared priorities. The CHNA for SSM Health DePaul Hospital - St. Louis was approved on November 25, 2024, is available here: [Community Health Needs Assessment](#). The CHNA Report outlines the process followed to identify community health needs and the resulting priorities to be addressed during 2025-2027:



Behavioral Health

- Mental Health/Wellbeing
- Substance Use



Food and Nutrition Security

This Community Health Improvement Plan report strives to take each of the identified priorities and create actionable strategies to continue to address the needs of the communities we serve. This CHIP report will serve as the guiding document for community health improvement efforts by SSM Health individual hospitals, collectively as a region, as well as in collaboration with regional partners including other hospital systems, public health departments and community-based organizations and social service providers.

This report was approved on February 24, 2025, and will remain in place through 2027. The CHNA process embraced by the SSM Health DePaul Hospital - St. Louis focused on collaboration with other hospital systems in the St. Louis region to engage both community members and stakeholders. This intentional community-centered process provided a collective understanding of the needs from community as well as the clear mandate from community that community health improvement efforts are most effective when done collaboratively. In creating our Community Health Improvement Plan (CHIP), the collaboration with partner organizations and community again serves as our foundation not only continuing our efforts in partnership with regional hospital system partners including BJC Healthcare, Mercy and St. Luke's, but further expanding our collaboration for this CHIP with the City of St. Louis Department of Health and St. Louis County Public Health Department.



SSM Health DePaul Hospital - St. Louis staff distribute food to the community

About SSM Health

Nationally recognized for quality and innovation, SSM Health is a Catholic, not-for-profit, fully integrated health system working to advance health equity and empower all people to achieve their full potential. With care delivery sites in Illinois, Missouri, Oklahoma, and Wisconsin, SSM Health provides convenient access to high-quality community-based services as well as world-class academic medicine, clinical trials, and research studies. The organization’s footprint includes hospitals, physician offices, outpatient and virtual care services, senior care, comprehensive home care and hospice services, a fully transparent pharmacy benefit company, a health insurance company, and an accountable care organization. As one of the largest employers in every community it serves, the organization’s 40,000 team members and 13,900+ providers are dedicated to fulfilling SSM Health’s Mission: “Through our exceptional health care services, we reveal the healing presence of God.” Like our founding sisters, we care deeply for our communities -- SSM Health reported \$470 million in community benefit in 2023, including the provision of more than \$346 million in uncompensated care.

SSM Health Fast Facts at a Glance

Community Benefit	\$470 million
Team Members*	40,000
Providers on Medical Staff*	13,900+
Dean Health Plan members**	485,000+
Navitus members**	14 million+ across 50 states
Inpatient Admissions	149,221
Outpatient Visits	21 million
Completed Medical Group Appointments	6.1 million
Outpatient Surgeries	94,588
Virtual Visits	229,574
Home Care Visits	240,189



*Through our exceptional healthcare services,
we reveal the healing presence of God.*

Fast Facts reflect 2023 totals, unless otherwise noted.

** Values are approximate as of April 2024*

*** Values for Dean Health Plan (including Prevea360) and Navitus as of January 2024*

SSM Health DePaul Hospital - St. Louis



Exceptional services

Neuroscience and stroke treatment

As a Joint Commission-Certified Comprehensive Stroke Center, we are the referral center in this region for the care of complex stroke patients and provide stroke-related continuing education to other medical colleagues. SSM Health DePaul Hospital is honored to participate in many multicenter research trials to find new treatments for stroke and identify best practices in stroke care. As a State of Missouri Level 1 Stroke Center, we work closely with our EMS partners to provide the highest quality stroke care from the first call to arrival at the emergency department.

Our teams are also trained in the latest tools and best practices, including using artificial intelligence (AI) technology to send images from brain imaging scans to our stroke experts within minutes to stop strokes faster. This allows the proper medication to be provided to the patient faster than before. Rehabilitation for stroke care by physical therapists, occupational therapists, and speech therapists starts within a day of arrival and continues until discharge to home or another level of care if needed.

SSM Health Weight Management Services

SSM Health Weight Management Services offers breakthrough surgical and non-surgical options that can be tailored to fit each person's weight-loss goals. Our patients find comfort knowing our surgeons have performed more than 7,000 life-changing and lifesaving weight-loss surgeries to help them lead healthier and happier lives. We offer a full spectrum of services both in person and online. A complete multidisciplinary team helps those we serve meet their weight-loss goals at every step by incorporating licensed dietitians and certified bariatric counselors. We have more bariatric nurses certified through the American Society for Metabolic & Bariatric Surgery than any other program in the state, and we are proud to be recognized for delivering the highest quality care through insurance providers such as Blue Cross Blue Shield, Aetna, Cigna, UnitedHealthcare, and others.

Location:

12303 DePaul Drive, St. Louis, MO 63044

Contact:

314-344-6000

Licensed Beds: 540

Key Statistics:

(on an annual basis)

Employees: 1,597

Admissions: 17,974

Births: 749

Emergency visits: 49,405

Outpatient visits: 152,657

Inpatient surgeries: 3,532

Outpatient surgeries: 7,958

SSM Health Behavioral Health

Urgent Care visits: 4,181

Joint Replacement Center

The Joint Replacement Center (JRC) at SSM Health DePaul Hospital is the first hospital department in the St. Louis region to be awarded two distinguished national certifications in joint replacement with a Gold Seal of Approval® from The Joint Commission. In May 2022, the JRC was the first to receive an advanced certification for total hip and total knee replacement and a core certification in total shoulder replacement. Orthopedic care begins with our Surgery Evaluation Clinic. Our teams work with patients to help pre-surgical optimization of anemia management, smoking cessation, and diabetes management preoperatively. This dedication ensures our patients are ready for surgery and a successful recovery. Our orthopedic surgeons perform more joint replacements each year than most surgeons nationally and were among the first in Missouri to use minimally invasive surgical techniques.

Community health initiatives

At SSM Health DePaul Hospital, we're determined to meet the needs of our community. We established disease management clinics including a Transitional Care Clinic, the region's first SSM Health Behavioral Health Urgent Care, a Hepatitis C Clinic, a Long-Acting Injectables Clinic, and expanded our reach for behavioral health trauma services.

The Connection for Health and Healing Program was established as a collaborative community improvement initiative led by SSM Health DePaul Hospital, in partnership with IFM Community Medicine (IFM). The program is made possible by a Bridgeton Landfill Community Project Fund Grant to promote community betterment programs in north St. Louis County.

Services offered at SSM Health DePaul Hospital

- SSM Health Cardinal Glennon Children's Hospital emergency and pediatric care
- OB Care Center
- Electrophysiology Lab (EP Lab)
- Endoscopy Center
- SSM Health Behavioral Health
- SSM Health Breast Care, offering 3D mammography
- SSM Health Sleep Services
- SSM Health Heart & Vascular Care (offering electrophysiology and 24-hour cardiac catheter lab)
- SSM Health Imaging Services (inpatient services and free-standing outpatient services on campus)
- SSM Health Orthopedics (first Joint Commission-certified program in Missouri and recipient of the Joint Commission Gold Seal of Approval for health care quality)

- Family Birthplace, Level II Specialty Nursery (baby-friendly designation)
- SSM Health Neurosciences (Joint Commission-Certified Comprehensive Stroke Center, neurointerventional and neurosurgical capabilities)
- SSM Health Pharmacy (retail pharmacy and bedside prescription delivery services)
- SSM Health Weight Management Services (surgical and non-surgical solutions for weight loss)
- Surgical services (inpatient and outpatient centers, ambulatory surgery center)

Awards

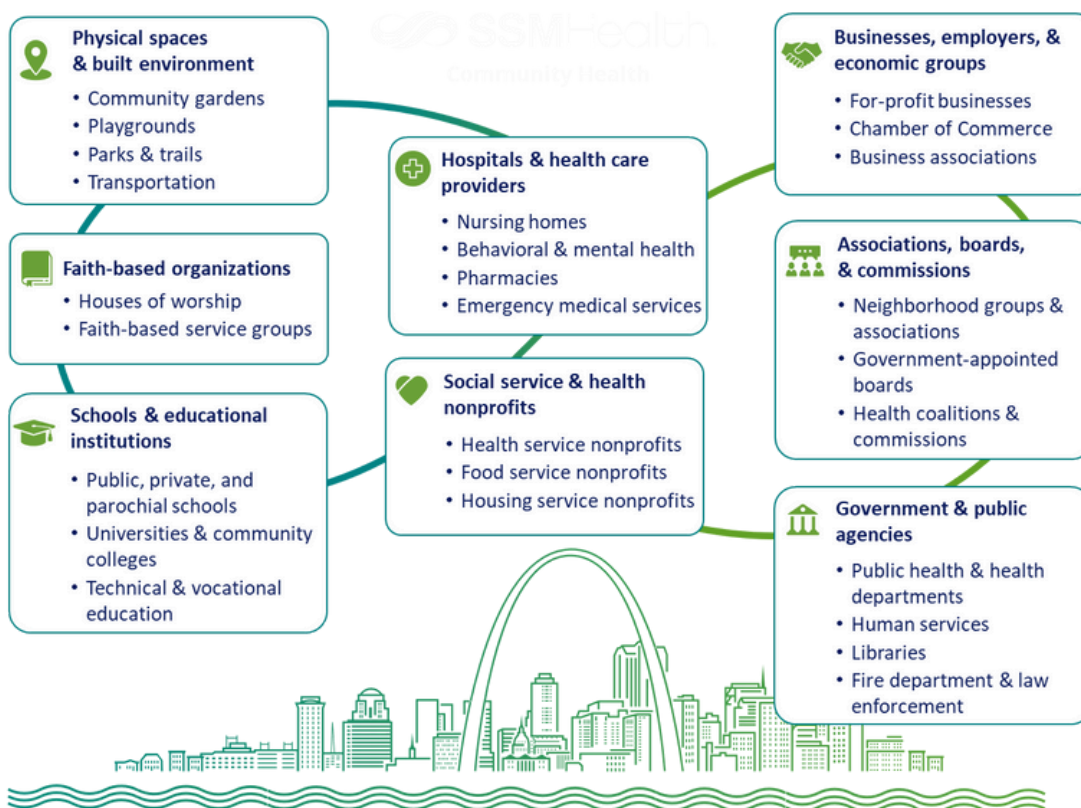
- Aim for Excellence Award (Long-Acting Injectables Clinic)
- Blue Cross Blue Shield Distinction Center for Bariatric Services
- Blue Distinction Center+ for knee and hip replacement by Blue Cross Blue Shield of Missouri
- Get with the Guidelines: Stroke GOLD Plus with Target: Stroke Honor Roll Elite Plus, Advanced Therapy and Target: Type 2 Diabetes Honor Roll
- Joint Commission-Designated Comprehensive Stroke Center AHA Stroke, Bronze
- Musculoskeletal Center of Excellence by Blue Cross Blue Shield of Michigan
- National Quality Approval since 2009 for the Joint Replacement Center
- Joint Solutions Center of Excellence by Optum



CHIP Process, Partners and Guiding Principals

Community Health, as defined by the America Hospital Association, refers to the non-clinical approaches for improving health, preventing disease, and reducing disparities through addressing social, behavioral, environmental, economic, and medical determinants of health in a geographic area.[i] The Community Health Needs Assessment (CHNA) and Community Health Improvement Plan (CHIP) are two important processes that assist SSM Health DePaul Hospital - St. Louis gain stronger understanding of the community, develop and deepen relationships with our community as well collectively identify shared priorities and strategies to address them.

SSM Health DePaul Hospital - St. Louis's Community Health Needs Assessment was conducted in partnership with the St. Louis Regional Hospital Collaborative including BJC Healthcare, Mercy, and St. Luke's health systems. This collaboration was formed with the shared understanding that all of the regional health systems within St. Louis serve the same communities and that the process to engage with and learn from community is stronger in collaboration than when done as individual organizations. The community-centered approach embraced by the collaborative to conduct the CHNA is fully outlined in the [SSM Health DePaul Hospital - St. Louis's CHNA report](#) and the graphic below demonstrates the broad outreach engaged in both the CHNA and CHIP efforts to fully engage the expertise and experience of all of our partners.



[i] <https://www.aha.org/center/community-health-well-being#:~:text=What%20is%20Community%20Health%3F,in%20a%20geographically%20defined%20population.>

CHIP Process, Partners and Guiding Principals

While the hospital and health systems in the St. Louis Regional Hospital Collaborative all conducted the information and data gathering portion of the CHNA together, our reporting timelines differ and each organization will therefore produce their own CHNA and CHIP reports. However, our shared commitment to working with community remains and all members of the collaborative remain committed to engaging in Community Health Improvement efforts collectively throughout the St. Louis region moving forward.

In addition to collaboration with hospital systems, community members and stakeholders, partners in public health were also engaged in our CHNA and CHIP processes. Public Health entities are required to conduct community health assessments and community health improvement plans every 5 years while nonprofit hospital and health systems are every 3 years. The SSM Health DePaul Hospital - St. Louis identified their community of focus for our CHNA as North St. Louis County and therefore a key partner in our efforts is the St. Louis County Department of Public Health.



In 2022 the St. Louis Department of Public Health collaborated with the City of St. Louis Department of Health for a first-ever combined Community Health Assessment and then a joint Community Health Improvement Plan was produced providing a regional plan for their identified priorities from 2023-2027. The alignment and shared commitment of the city and county public health departments mirrors the alignment of the St. Louis region’s hospital systems: **community health improvement efforts are best done and most effective in collaboration**. Many metropolitan areas across the United States have recognized the importance of collaborative CHNAs and more importantly focused collaboration on shared CHNA priorities and the resulting CHIP strategies. And while St. Louis is not yet to a single CHNA and CHIP report, we do have an amazing opportunity to impact community health through collaboration. SSM Health DePaul Hospital - St. Louis is committed to aligning with the ongoing community health improvement efforts begun by the city/county CHIP process for our shared priorities moving forward.

CHIP Process, Partners and Guiding Principals

The 2 Community Health priorities identified by SSM Health DePaul Hospital - St. Louis aligns with 2 of the 5 priorities by the city/county collaboration. It should be noted that the outlined strategies for Chronic Disease in the city/county CHIP all relate to food/nutrition security and fundamentally align despite different naming.

The city/county public health CHIP partnership has resulted in working groups being formed for each of the identified priorities bringing together community stakeholders, service providers, hospitals, and health systems, as well as public health professionals to focus on each of their identified priorities for the region. Each working group is led by a community organization(s) known for their expertise and trusted leadership in that priority area and all of them are already partners of SSM Health DePaul Hospital - St. Louis. In order to streamline efforts and ensure continuity of partnerships, focus, and impact in each of our identified priorities, SSM Health DePaul Hospital - St. Louis commits to being active and engaged partners in each of the regional work groups for Behavioral Health and Chronic Disease/Food & Nutrition Security. This alignment allows for regional/collaborative initiatives, shared data tracking and outcomes measurement, conservation of resources, and impactful – not duplicative – engagement with community to ensure overall impact of initiatives.

Organizations leading regional work groups



Behavioral Health
• Behavioral Health Network



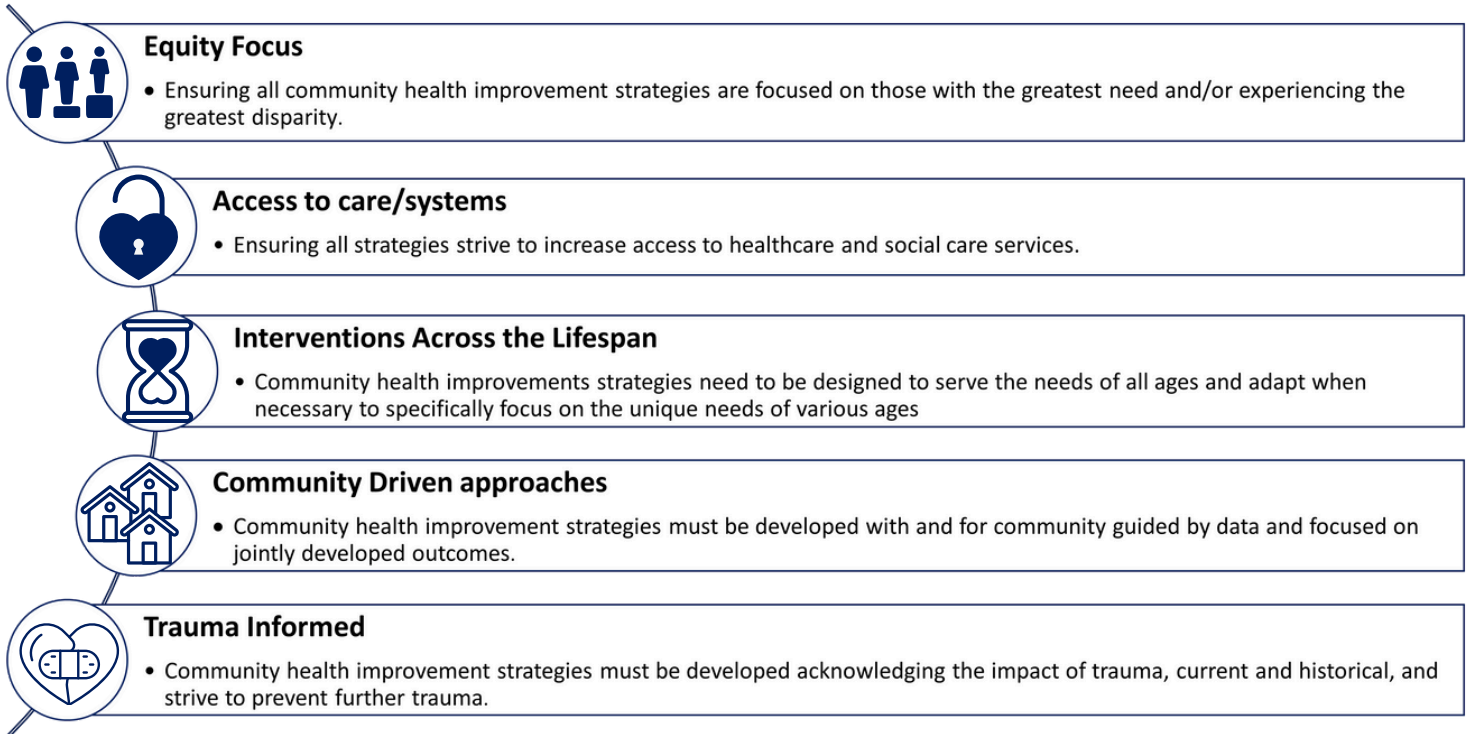
Chronic Disease
• American Heart Association

Aligning our strategies and working collaboratively broadens the impact for SSM Health DePaul Hospital - St. Louis. Not only will we continue to focus on specific hospital and SSM Health St. Louis activities, this will allow us to share learnings with partners and work collaboratively on regional initiatives in addition to our focused hospital efforts.

The timing of this alignment is also important and impactful. The urgency for improvement in all identified priorities areas is well noted and documented in each of our CHNAs. Leaning into true collaboration allows each partner entity to learn from and serve community more deeply as well as build trust with community and one another.

CHIP Process, Partners and Guiding Principals

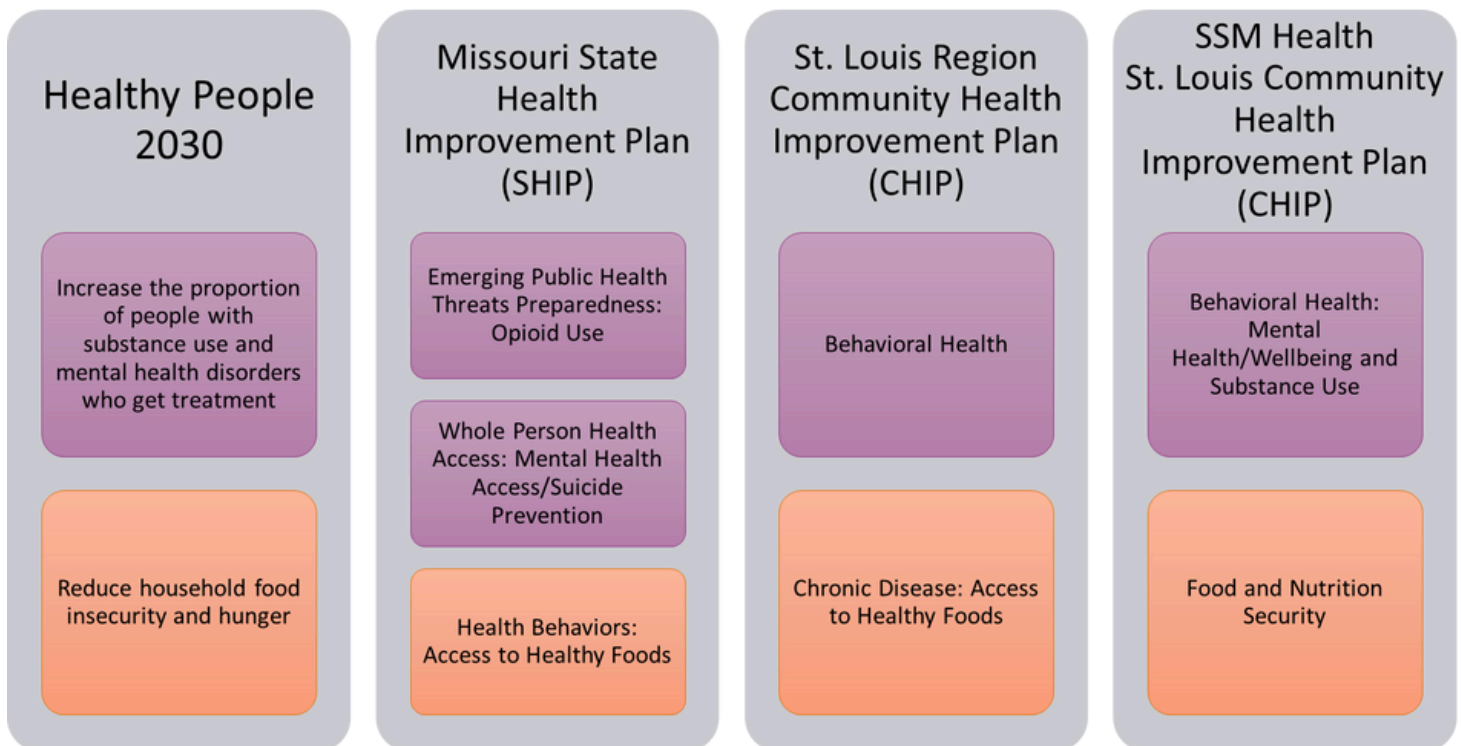
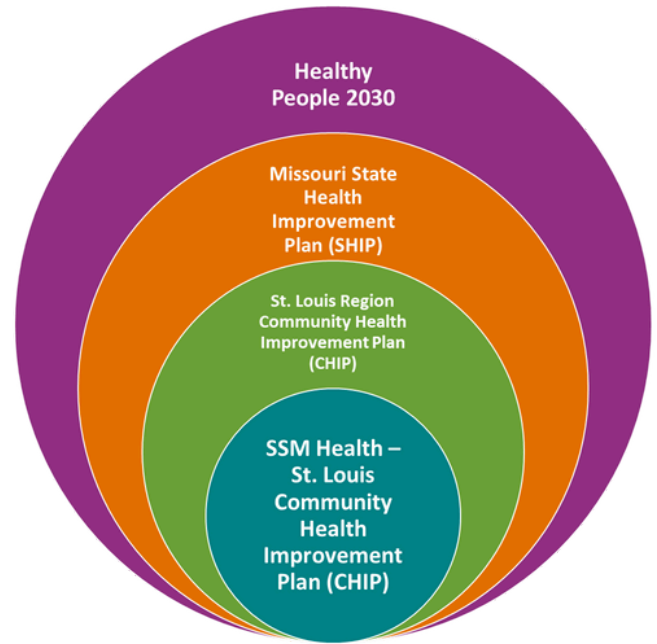
Throughout our CHNA and CHIP process, SSM Health DePaul Hospital - St. Louis has committed to a set of principles to anchor our efforts, community engagement, strategies, and collaborations. All of our partners, including the CHIP Workgroups initiated by the city/county public health collaboration have also committed to the same principles ensuring a community-centered approach to all we do to improve the health of the St. Louis community. The principles we commit to include:



The commitment to these guiding principles for CHIP strategies and initiatives is essential for our collective work and for achieving the outcomes our community deserves.

Aligning SSM Health St. Louis CHIP Efforts with National, State and Regional Initiatives

While SSM Health DePaul Hospital - St. Louis is directly partnering and aligning with the St. Louis County Department of Public Health and City of St. Louis Department of Health for the implementation of regional Community Health Improvement strategies, alignment with larger state and national plans is imperative for improving health outcomes. Healthy People 2030 strives to set data-driven national objectives to improve health and well-being over a 10 year period. In addition, each state creates a Health Improvement plan further identifying goals, objectives and activities with a specific focus on their population. By ensuring alignment with these larger national and state goals, the St. Louis community-centered initiatives embraced by the city/county regional plan and SSM Health DePaul Hospital - St. Louis strive to have deep and broad impact.



Aligning with St. Louis Public Health Partners

Below are the stated goals of the St. Louis Region Community Health Improvement Plan created collaboratively by the St. Louis County Department of Public Health and the City of St. Louis Department of Health. SSM Health DePaul Hospital - St. Louis is aligning our CHIP strategies and activities within these goals and will be active members on all regional working groups for each priority. The full outline of the city/county CHIP objectives and goals under each goal is available here: [St. Louis Region Community Health Improvement Plan](#). A listing of the goals, objectives and activities can also be found in Appendix A.

Priorities	Goals
Behavioral Health: Mental Health/Wellbeing and Substance Use	<ul style="list-style-type: none"> • Improve behavioral health and wellness through the availability, accessibility, and affordability of integrated and consistent, coordinated, patient-centered care for our most affected populations in St. Louis County and City of St. Louis through policy changes. • Improve behavioral health and wellness among affected populations through education and community navigation. • Increase the availability and accessibility of behavioral health services by utilizing systems-level navigation and integrated, coordinated, patient-centered care in the St. Louis region.
Food and Nutrition Security	<ul style="list-style-type: none"> • Increase healthy food availability, accessibility, and utilization as measured by: <ul style="list-style-type: none"> ◦ More coordinated, unified, systemic nutrition security solutions. ◦ Increased participation in food assistance programs (SNAP, WIC, School Meals, CACFP) ◦ Food and nutrition prioritized in health care for prevention and management of chronic disease (food security screening and referral, healthy food prescription, etc.) ◦ Nutrition valued as essential in hunger relief (food pantries, food banks) and food assistance programs (SNAP, WIC, School Meals, CACFP) ◦ Reduced food desert footprint

Behavioral Health: Mental Health & Wellbeing and Substance Use



Goal:

- Improve behavioral health and wellness through the availability, accessibility, and affordability of integrated and consistent, coordinated patient-centered care for our most vulnerable populations in St. Louis County and City through policy changes.
- Improve behavioral health and wellness among vulnerable populations through education and community navigation.
- Increase the availability and accessibility of behavioral health services by utilizing systems-level navigation and integrated coordinated patient-centered care in the St. Louis region.

SSM Health DePaul Hospital - St. Louis commits to working towards the following objectives in addition to those outlined in the St. Louis Region Community Health Improvement Plan:

Objectives:	Community Partners:
Increase community awareness and utilization of SSM Health Behavioral Health Urgent care centers located at SSM Health Saint Louis University Hospital and SSM Health DePaul Hospital	BJC Behavioral Health, Places for People, City of St. Louis Department of Health - Behavioral Health Bureau
Increase community awareness and utilization of SSM Health Long Acting Injectable Clinics located at SSM Health Saint Louis University Hospital, SSM Health DePaul Hospital, and SSM Health St. Joseph Hospital - Wentzville	Community Behavioral Health providers
Actively participate in regional efforts to explore and establish Medical Respite program(s) and/or increased services for those who are unhoused and have Behavioral Health concerns	Hospital to Housing Collaborative Partners
Strengthen regional partnership with Crisis Intervention Teams within St. Louis County and St. Charles County Police Departments by providing Behavioral Health professionals for collaborative community engagement teams.	St. Louis County St. Charles County Police Department, St. Louis County Police Department, BJH Healthcare, Compass Health Network, Police Department

Behavioral Health: Mental Health & Wellbeing and Substance Use



Objectives:	Community Partners:
<p>Optimize participation in regional initiatives led by the Behavioral Health Network for patient navigation supports from acute to outpatient care for mental health services. Programs currently include: Adult and Youth Emergency Room Enhancement Programs and Hospital Community Linkages program.</p>	<p>Behavioral Health Network (BHN) community provider organizations, BJC Healthcare, and Mercy</p>
<p>Actively participate in regional efforts to explore and establish Mandatory Outpatient Therapy (MOT) for those who have behavioral health concerns, interactions with law enforcement and have high utilization of acute care services.</p>	<p>Community Behavioral Health providers, Law enforcement entities</p>
<p>Optimize participation in regional initiatives led by the Behavioral Health Network for patient/community navigation support for substance use services. Programs include: EPICC, Dunnica Sobering Support Center and Youth Family Treatment Enhancement and Expansion.</p>	<p>Behavioral Health Network (BHN) community provider organizations, BJC Healthcare, and Mercy</p>
<p>Increase community knowledge and utilization of drug take back bins located throughout the community and at SSM Health St. Louis hospitals</p>	<p>Community Pharmacies, Police Departments, Public Health Departments</p>
<p>Increase Behavioral Health supports within SSM Health primary care settings through the SSM Health Virtual Behavioral Health Integration program. Explore expansion from adult primary settings to additional specialty care settings including but not limited to: pediatrics, Obstetrics & Gynecology, and oncology.</p>	

Food and Nutrition Security

Goal: Increase healthy food availability, accessibility, and utilization measured by:

- Increased coordinated, unified, systemic nutrition security solutions.
- Increased participation in food assistance programs (SNAP, WIC, School Meals, CACFP)
- Food and nutrition prioritized in health care for prevention and management of chronic disease (food security screening and referral, healthy food prescription, etc.)
- Nutrition is valued as essential in hunger relief (food pantries, food banks) and food assistance programs (SNAP, WIC, School Meals, CACFP)
- Reduced food desert footprint

SSM Health DePaul Hospital - St. Louis commits to the following objectives in addition to those already outlined in the St. Louis Region Community Health Improvement Plan:

Objectives:	Community Partners:
Optimize SSM Health SDOH inpatient screening for food insecurity ensuring those identified are connected to community-based resources. Connecting a minimum of 50% of identified inpatients to SSM Health’s Bread Basket Program providing immediate food resources and/or direct connection to St. Louis Area Foodbank Food Resource Team.	St. Louis Area Foodbank
In partnership with the St. Louis Area Foodbank, conduct Community Food Distribution events at all SSM Health St. Louis hospitals on a yearly basis to support regional efforts to address food insecurity in community.	St. Louis Area Foodbank
Optimize partnerships with food and nutrition support organizations to increase food security and nutritional education for specific populations such as those with chronic disease, cancer or during pregnancy	Food Outreach, Operation Food Search
Explore opportunities with Supplemental Nutrition Assistance Program Education (SNAP-Ed) partnership through University of Missouri Extension to increase nutrition education security within our communities	University of Missouri Extension

Food and Nutrition Security

Objectives:	Collaboration:
Evaluate and optimize partnership with IFM Community Medicine and Operation Food Search to provide clinical services, snack kits, and nutrition education at Epworth Drop-In Center for youth ages 11-20	Epworth Drop-in Center, IFM Community Medicine, Operation Food Search

Moving Forward



The partnerships, goals, objectives and activities outlined in this Community Health Improvement Plan are ambitious. The priorities identified are complex and the disparities in outcomes experienced within our communities for each priority is significant. It will take time, resources, committed partnerships and most importantly community-driven collaboration to achieve our stated goals. While this CHIP will guide our efforts through 2027, the work in each of these priority areas began years ago and will need to continue well beyond this 3-year CHNA/CHIP cycle.

The level of collaboration between health systems and with our public health entities in the area of Community Health improvement plans and their implementation has never been stronger in the St. Louis Region. The opportunity for community-centered collaborative work to truly impact health outcomes is real and SSM Health DePaul Hospital - St. Louis is ready to be active and committed partners in this work. SSM Health DePaul Hospital - St. Louis has been providing exceptional healthcare services to the St. Louis community for generations and remains committed to continuing to do so for generations come. We look forward to working closely with community members, regional hospital partners, public health entities, community organizations, and service providers to earnestly strive for improved health and well-being for the St. Louis community.





SSMHealth.

2025-2027

Appendices

Appendix A:

St. Louis Region Community Health Improvement Plan: Objectives and Activities

Below is a listing of the priorities and goals included in the St. Louis Region Community Health Improvement Plan created by the City of St. Louis Department of Health and the St. Louis County Department of Public Health. The full report can be viewed [here](#).

2023 – 2027 St. Louis Regional CHIP

Overview

Priorities	Goals
Priority 1: Intersection of Health and Economic Mobility	<ol style="list-style-type: none"> 1. Build coalition infrastructure for the Intersection of Health and Economic Mobility. 2. By 2028, implement opportunities to increase overall wealth by reducing the cost of housing and improving housing-related resources. By 2028, implement opportunities to 3. increase overall income by increasing employment and education opportunities, improving wages, and reducing barriers as necessary.
Priority 2: Chronic Disease	<ol style="list-style-type: none"> 1. Increase healthy food availability, accessibility, and utilization as measured by: <ol style="list-style-type: none"> a) More coordinated, unified, systemic nutrition security solutions. b) Increased participation in food assistance programs (SNAP, WIC, School Meals, CACFP) c) Food and nutrition prioritized in health care for prevention and management of chronic disease (food security screening and referral, healthy food prescription, etc.) d) Nutrition valued as essential in hunger relief (food pantries, food banks) and food assistance programs (SNAP, WIC, School Meals, CACFP) e) Reduced food desert footprint
Priority 3: Maternal and Child Health	<ol style="list-style-type: none"> 1. Address racial disparities to reduce morbidity and mortality and improve maternal and infant health.
Priority 4: Violence Prevention	<ol style="list-style-type: none"> 1. By 2028, reduce non-fatal shooting incidents by 25% through increased coordination of community-level response, implementation of prevention practices, and increased community engagement in a holistic approach to public safety.
Priority 5: Behavioral Health	<ol style="list-style-type: none"> 1. By 2027, improve behavioral health and wellness through the availability, accessibility, and affordability of integrated and consistent, coordinated, patient-centered care for our most affected populations in St. Louis County and City of St. Louis through policy changes. 2. By 2027, improve behavioral health and wellness among affected populations through education and community navigation. 3. By 2027, increase the availability and accessibility of behavioral health services by utilizing systems-level navigation and integrated, coordinated, patient-centered care in the St. Louis region.